



Anti-MOUSE IgG [H&L] (GOAT) Antibody Phycoerythrin conjugated Min X Bv Ch Gt GP Hs Ham Hu Rb Rt &Sh Serum Proteins - 610-108-121

Code: 610-108-121

Size: 1 mL

Product Description: Anti-MOUSE IgG [H&L] (GOAT) Antibody Phycoerythrin conjugated Min X Bv Ch Gt GP Hs Ham Hu Rb Rt &Sh Serum Proteins - 610-108-121

Concentration: 0.5 mg/mL by absorbance = 82.0 at 565 nm

PhysicalState: Lyophilized

Label	R-Phycoerythrin (RPE)
Host	Goat
Emission Wavelength	575
Excitation Wavelength	488
Species Reactivity	Mouse
Buffer	0.02 M Potassium Phosphate, 0.15 M Sodium Chloride, pH 7.2
Stabilizer	10 mg/mL Bovine Serum Albumin (BSA) - Immunoglobulin and Protease free
Preservative	0.01% (w/v) Sodium Azide
Storage Condition	Store vial at 4° C prior to restoration. For extended storage aliquot contents and freeze at -20° C or below. Avoid cycles of freezing and thawing. Centrifuge product if not completely clear after standing at room temperature. This product is stable for several weeks at 4° C as an undiluted liquid. Dilute only prior to immediate use.
Synonyms	Mouse IgG (H&L) Antibody, Gt-a-Mouse IgG(H&L) Phycoerythrin conjugated, Mouse IgG(H&L) Phycoerythrin Antibody in goat, Mouse IgG (H&L) Phycoerythrin conjugated Secondary Antibody.
Application Note	Suitable for immunomicroscopy and flow cytometry or FACS analysis as well as other antibody based fluorescent assays requiring extremely low background levels, absence of F(c) mediated binding, lot-to-lot consistency, high titer and specificity. The maximum amount of reagent required to stain 1 x 10E6 cells in flow cytometry is approximately 1.0 µg of antibody conjugate. Lesser amounts of reagent may be sufficient for staining. Optimal titers for other applications should be determined by the researcher. As a general guideline dilutions of 1:100 to 1:250 should be suitable for most applications.
Background	Anti-Mouse IgG (H&L) Phycoerythrin conjugated antibody generated in goat detects specifically mouse IgG (H&L). This secondary conjugated antibody anti-mouse is ideal for investigators who routinely perform immunomicroscopy and flow cytometry or FACS analysis as well as other antibody-based fluorescent assays requiring extremely low background levels.
Purity And Specificity	This product was prepared from monospecific antiserum by immunoaffinity chromatography using Mouse IgG coupled to agarose beads followed by solid phase adsorption(s) to remove any unwanted reactivities, conjugation to phycoerythrin and subsequent purification, and extensive dialysis against the buffer stated above. Assay by immunoelectrophoresis resulted in a single precipitin arc against anti-Phycoerythrin, anti-Goat Serum, Mouse IgG and Mouse Serum. No reaction was observed against Bovine, Chicken, Goat, Guinea Pig, Hamster, Horse, Human, Rabbit, Rat and Sheep Serum Proteins.
Assay Dilutions	FLOW 1:100 - 1:250
IFMICROSCOPY	1:100 - 1:250
FLOWCYTOMETRY	1:100 - 1:250
OTHER ASSAYS	FLOW 1:100 - 1:250
Expiration	Expiration date is one (1) year from date of opening.
Immunogen	Anti-Mouse IgG was produced by repeated immunization with Mouse IgG whole molecule in goat.
Related Products	

200-301-268 Anti-AKT pS473 (MOUSE) Monoclonal Antibody - 200-301-268

B304 NORMAL GOAT SERUM (NGS) - B304

B501-0500 BLOTTO Immunoanalytical Grade (Non-Fat Dry Milk) - B501-0500

CUST85

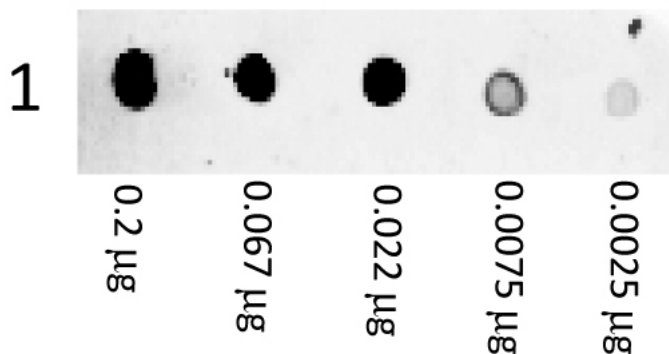
ATTO-TEC CONJUGATION (up to 5 mg). Specify ATTO 425, ATTO 488, ATTO 532, ATTO 550, ATTO 594, ATTO 647N or ATTO 655 fluorescent dye. - CUST85

Related Links

Images

1

Dot Blot of Goat anti-Mouse IgG Antibody Phycoerythrin Conjugated. Antigen: Mouse IgG. Load: 3-fold serial dilution starting at 200 ng. Primary antibody: None. Secondary antibody: Phycoerythrin goat secondary antibody at 1:1,000 for 60 min at RT. Block: 5% BLOTTO 1 Hour at RT.



Disclaimer

This product is for research use only and is not intended for therapeutic or diagnostic applications. Please contact a technical service representative for more information. All products of animal origin manufactured by Rockland Immunochemicals are derived from starting materials of North American origin. Collection was performed in United States Department of Agriculture (USDA) inspected facilities and all materials have been inspected and certified to be free of disease and suitable for exportation. All properties listed are typical characteristics and are not specifications. All suggestions and data are offered in good faith but without guarantee as conditions and methods of use of our products are beyond our control. All claims must be made within 30 days following the date of delivery. The prospective user must determine the suitability of our materials before adopting them on a commercial scale. Suggested uses of our products are not recommendations to use our products in violation of any patent or as a license under any patent of Rockland Immunochemicals, Inc. If you require a commercial license to use this material and do not have one, then return this material, unopened to: Rockland Inc., P.O. BOX 326, Gilbertsville, Pennsylvania, USA.