

**Name: Rabbit polyclonal OR10H3/10H4 antibody**  
**Product Data Sheet - ANTIBODY****Catalog: TA315330**

<b>Components:</b>	• Rabbit polyclonal OR10H3/10H4 antibody (TA315330)
<b>Amount:</b>	100ul
<b>Immunogen:</b>	The antiserum was produced against synthesized peptide derived from C-terminal of human OR10H3/10H4.
<b>Host:</b>	Rabbit
<b>Isotype:</b>	IgG
<b>Species Reactivity:</b>	Human
<b>Guaranteed Applications:</b>	WB
<b>Suggested Dilutions:</b>	WB: 1:500~1:3000, ELISA: 1:10000
<b>Concentration:</b>	1mg/ml
<b>Buffer:</b>	Phosphate buffered saline (without Mg <sup>2+</sup> and Ca <sup>2+</sup> ), pH 7.4, 150mM NaCl, 0.02% sodium azide and 50% glycerol.
<b>Purification:</b>	The antibody was affinity-purified from rabbit antiserum by affinity-chromatography using epitope-specific immunogen.
<b>Storage Condition:</b>	Shipped at -20C. Upon delivery store at -20C. Dilute in PBS (pH7.3) if necessary. Stable for 12 months from date of receipt. Avoid repeated freeze-thaws.

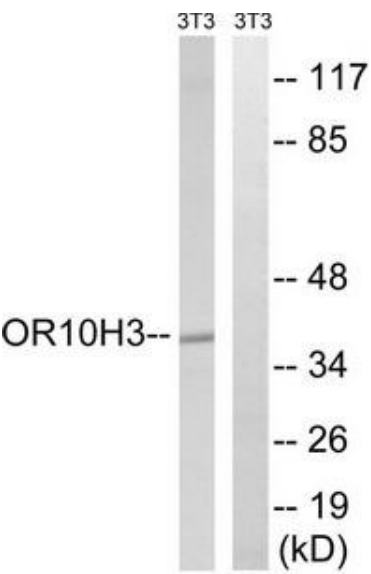
## Target

<b>Target Name:</b>	Homo sapiens olfactory receptor, family 10, subfamily H, member 3 (OR10H3)
<b>Alternative Name:</b>	MGC119147; MGC119149
<b>Database Link:</b>	NP_039226
<b>Function:</b>	

***This product is to be used for laboratory only. Not for diagnostic or therapeutic use.***

© 2014 OriGene Technologies, Inc. 9620 Medical Center Dr., Suite 200, Rockville, MD 20850

Validation Data



\* More validation images may be available on our website: <http://www.origene.com/antibody/TA315330.aspx>