

Name: Rabbit polyclonal anti-MRPL46 antibody
Product Data Sheet - ANTIBODY**Catalog: TA315335**

Components:	<ul style="list-style-type: none">• Rabbit polyclonal anti-MRPL46 antibody (TA315335)• 1 vial of 20ug myc-DDK tagged MRPL46 HEK293T over-expression lysate lyophilized in RIPA buffer (LC402916). (Reconstitute into 20ul of 1x SDS sample buffer before loading; load 5ul per lane as WB control or as desired)
Amount:	100ul
Immunogen:	The antiserum was produced against synthesized peptide derived from internal of human MRPL46.
Host:	Rabbit
Isotype:	IgG
Species Reactivity:	Human, Mouse, Rat
Guaranteed Applications:	WB, IHC
Suggested Dilutions:	WB: 1:500~1:3000, IHC: 1:50~1:100, ELISA: 1:40000
Concentration:	1mg/ml
Buffer:	Phosphate buffered saline (without Mg ²⁺ and Ca ²⁺), pH 7.4, 150mM NaCl, 0.02% sodium azide and 50% glycerol.
Purification:	The antibody was affinity-purified from rabbit antiserum by affinity-chromatography using epitope-specific immunogen.
Storage Condition:	Shipped at -20C. Upon delivery store at -20C. Dilute in PBS (pH7.3) if necessary. Stable for 12 months from date of receipt. Avoid repeated freeze-thaws.

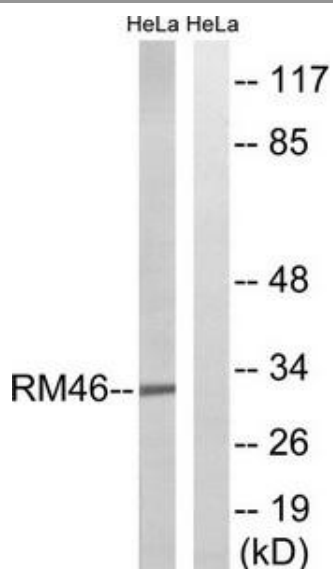
Target

Target Name:	Homo sapiens mitochondrial ribosomal protein L46 (MRPL46)
Alternative Name:	C15orf4; LIECG2; P2ECSL
Database Link:	NP_071446
Function:	

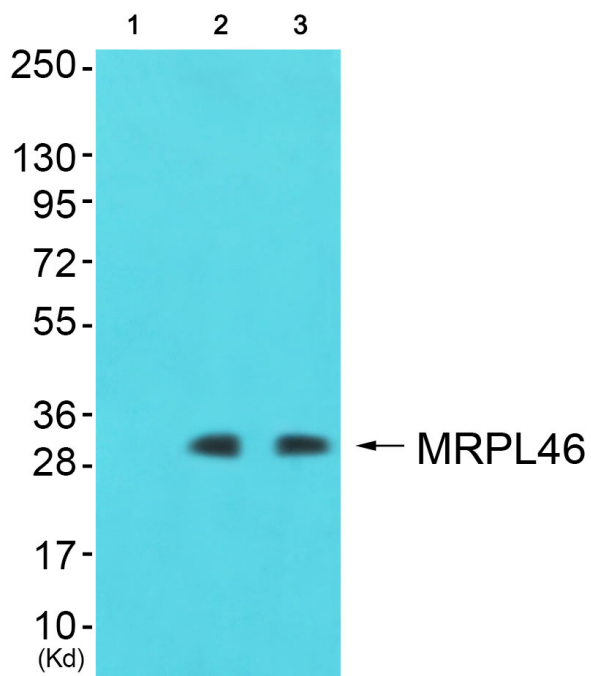
This product is to be used for laboratory only. Not for diagnostic or therapeutic use.

© 2014 OriGene Technologies, Inc. 9620 Medical Center Dr., Suite 200, Rockville, MD 20850

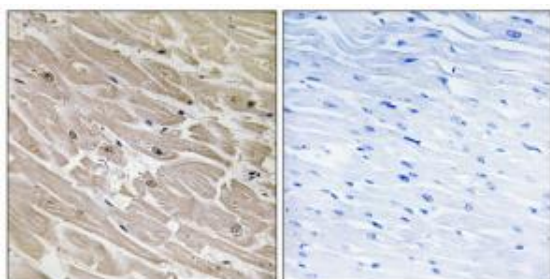
Validation Data



Western blot analysis of extracts from HeLa cells, using MRPL46 antibody. The lane on the right is treated with the synthesized peptide.



Western blot analysis of extracts from HuvEc cells (Lane 2) and HepG2 cells (Lane 3), using MRPL46 Antibody. The lane on the left is treated with synthesized peptide.



Immunohistochemistry analysis of paraffin-embedded human heart tissue using MRPL46 antibody. The picture on the right is treated with the synthesized peptide.

* More validation images may be available on our website: <http://www.origene.com/antibody/TA315335.aspx>

This product is to be used for laboratory only. Not for diagnostic or therapeutic use.

© 2014 OriGene Technologies, Inc. 9620 Medical Center Dr., Suite 200, Rockville, MD 20850