

Name: Rabbit polyclonal anti-TAF5L antibody
Product Data Sheet - ANTIBODY**Catalog: TA315365**

| | |
|---------------------------------|---|
| Components: | <ul style="list-style-type: none">• Rabbit polyclonal anti-TAF5L antibody (TA315365)• 1 vial of 20ug myc-DDK tagged TAF5L HEK293T over-expression lysate lyophilized in RIPA buffer (LC422496). (Reconstitute into 20ul of 1x SDS sample buffer before loading; load 5ul per lane as WB control or as desired) |
| Amount: | 100ul |
| Immunogen: | The antiserum was produced against synthesized peptide derived from internal of human TAF5L. |
| Host: | Rabbit |
| Isotype: | IgG |
| Species Reactivity: | Human |
| Guaranteed Applications: | WB |
| Suggested Dilutions: | WB: 1:500~1:3000, ELISA: 1:10000 |
| Concentration: | 1mg/ml |
| Buffer: | Phosphate buffered saline (without Mg ²⁺ and Ca ²⁺), pH 7.4, 150mM NaCl, 0.02% sodium azide and 50% glycerol. |
| Purification: | The antibody was affinity-purified from rabbit antiserum by affinity-chromatography using epitope-specific immunogen. |
| Storage Condition: | Shipped at -20C. Upon delivery store at -20C. Dilute in PBS (pH7.3) if necessary. Stable for 12 months from date of receipt. Avoid repeated freeze-thaws. |

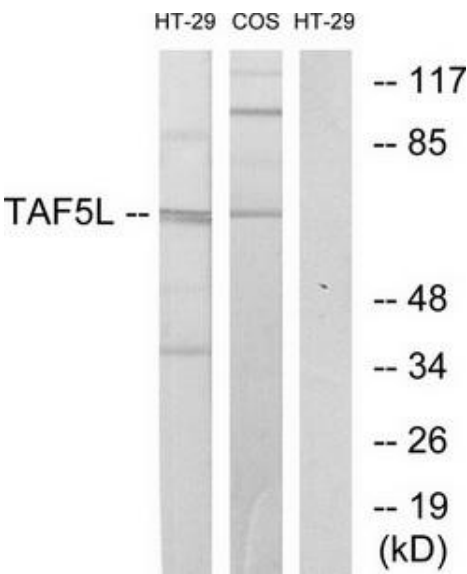
Target

| | |
|--------------------------|--|
| Target Name: | Homo sapiens TAF5-like RNA polymerase II, p300/CBP-associated factor (PCAF)-associated factor, 65kDa (TAF5L), transcript variant 2 |
| Alternative Name: | PAF65B |
| Database Link: | NP_001020418 |
| Function: | |

This product is to be used for laboratory only. Not for diagnostic or therapeutic use.

© 2014 OriGene Technologies, Inc. 9620 Medical Center Dr., Suite 200, Rockville, MD 20850

Validation Data



Western blot analysis of extracts from HT-29 cells and COS-7 cells, using TAF5L antibody. The lane on the right is treated with the synthesized peptide.

* More validation images may be available on our website: <http://www.origene.com/antibody/TA315365.aspx>