

Name: Rabbit polyclonal anti-EIF2AK1 antibody
Product Data Sheet - ANTIBODY**Catalog: TA315366**

Components:	• Rabbit polyclonal anti-EIF2AK1 antibody (TA315366)
Amount:	100ul
Immunogen:	The antiserum was produced against synthesized peptide derived from internal of human EIF2AK1.
Host:	Rabbit
Isotype:	IgG
Species Reactivity:	Human, Mouse
Guaranteed Applications:	WB
Suggested Dilutions:	WB: 1:500~1:3000, ELISA: 1:40000
Concentration:	1mg/ml
Buffer:	Phosphate buffered saline (without Mg ²⁺ and Ca ²⁺), pH 7.4, 150mM NaCl, 0.02% sodium azide and 50% glycerol.
Purification:	The antibody was affinity-purified from rabbit antiserum by affinity-chromatography using epitope-specific immunogen.
Storage Condition:	Shipped at -20C. Upon delivery store at -20C. Dilute in PBS (pH7.3) if necessary. Stable for 12 months from date of receipt. Avoid repeated freeze-thaws.

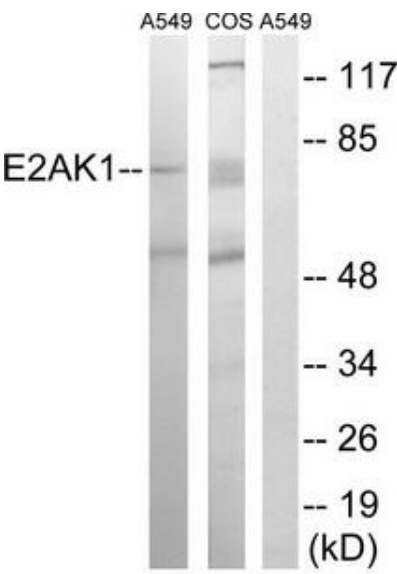
Target

Target Name:	Homo sapiens eukaryotic translation initiation factor 2-alpha kinase 1 (EIF2AK1), transcript variant 2
Alternative Name:	HCR; HRI
Database Link:	NP_001127807
Function:	

This product is to be used for laboratory only. Not for diagnostic or therapeutic use.

© 2014 OriGene Technologies, Inc. 9620 Medical Center Dr., Suite 200, Rockville, MD 20850

Validation Data



Western blot analysis of extracts from A549 cells and COS-7 cells, using EIF2AK1 antibody. The lane on the right is treated with the synthesized peptide.

* More validation images may be available on our website: <http://www.origene.com/antibody/TA315366.aspx>