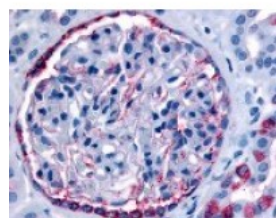




## PIB5PA Antibody

CATALOG NUMBER: 48-204



Immunohistochemistry staining of PIB5PA  
in glomerulus and renal tubular epithelium  
in cortex tissue using PIB5PA Antibody.

### Specifications

<b>SPECIES REACTIVITY:</b>	Gorilla, Horse, Human, Pig
<b>TESTED APPLICATIONS:</b>	IHC
<b>APPLICATIONS:</b>	PIB5PA antibody can be used in ELISA starting at 1:500 - 1:5000, and immunohistochemistry starting at 10 ug/mL.
<b>USER NOTE:</b>	Optimal dilutions for each application to be determined by the researcher.
<b>SPECIFICITY:</b>	BLAST analysis of the peptide immunogen showed no homology with other human proteins.
<b>IMMUNOGEN:</b>	PIB5PA antibody was raised against a peptide located near the internal domain of PIB5PA (Human).
<b>HOST SPECIES:</b>	Rabbit

### Properties

<b>PURIFICATION:</b>	Immunoaffinity Chromatography
<b>PHYSICAL STATE:</b>	Liquid
<b>BUFFER:</b>	PBS, 0.1% sodium azide.
<b>STORAGE CONDITIONS:</b>	PIB5PA antibody should be stored long term (months) at -80 °C and short term (days) at 4 °C. As with all antibodies avoid freeze/thaw cycles.
<b>CLONALITY:</b>	Polyclonal
<b>CONJUGATE:</b>	Unconjugated

### Additional Info

<b>ALTERNATE NAMES:</b>	INPP5J, PIB5PA, INPP5, PIPP
<b>ACCESSION NO.:</b>	Q15735
<b>PROTEIN GI NO.:</b>	116242713
<b>OFFICIAL SYMBOL:</b>	INPP5J
<b>GENE ID:</b>	27124

### Background

