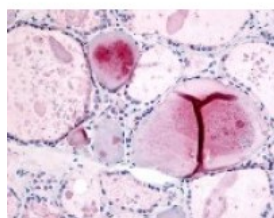




PDE8B Antibody

CATALOG NUMBER: 48-316



Immunohistochemistry staining of PDE8B
in thyroid tissue using PDE8B Antibody.

Specifications

SPECIES REACTIVITY:	Bat, Gibbon, Gorilla, Horse, Human, Monkey
TESTED APPLICATIONS:	IHC
APPLICATIONS:	PDE8B antibody can be used in ELISA starting at 1:10000, Western Blot starting at 1:500 - 1:2000, and immunohistochemistry starting at 1:200 - 1:400.
USER NOTE:	Optimal dilutions for each application to be determined by the researcher.
SPECIFICITY:	BLAST analysis of the peptide immunogen showed no homology with other human proteins.
IMMUNOGEN:	PDE8B antibody was raised against a peptide located near the internal domain of PDE8B (Human).
HOST SPECIES:	Rabbit

Properties

PURIFICATION:	Immunoaffinity Chromatography
PHYSICAL STATE:	Liquid
BUFFER:	PBS, 0.1% sodium azide.
STORAGE CONDITIONS:	PDE8B antibody should be stored long term (months) at -80 °C and short term (days) at 4 °C. As with all antibodies avoid freeze/thaw cycles.
CLONALITY:	Polyclonal
CONJUGATE:	Unconjugated

Additional Info

ALTERNATE NAMES:	PDE8B, ADSD, HsPDE8B, PPNAD3, Phosphodiesterase 8B
ACCESSION NO.:	O95263
PROTEIN GI NO.:	34223714
OFFICIAL SYMBOL:	PDE8B
GENE ID:	8622

Background

BACKGROUND:	Phosphodiesterase 8B, is a high affinity, cAMP-specific phosphodiesterase. Enhanced PDE8B activity has been
--------------------	---

associated with the phenotypic expression of Gsalpha mutations in human pituitary tumors. PDE8B is absent in normal pituitary but present in GH-secreting adenomas. PDE8B activity is inhibited by dipyridamole, but it is insensitive to rolipram, zaprinast, or IBMX.

FOR RESEARCH USE ONLY

December 13, 2016