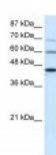




PRMT3 Antibody

CATALOG NUMBER: 27-506



Antibody used in WB on Human HepG2 at
0.2-1 ug/ml.

Specifications

SPECIES REACTIVITY:	Dog, Human, Mouse, Rat
TESTED APPLICATIONS:	ELISA, WB
APPLICATIONS:	PRMT3 antibody can be used for detection of PRMT3 by ELISA at 1:62500. PRMT3 antibody can be used for detection of PRMT3 by western blot at 2 ug/mL, and HRP conjugated secondary antibody should be diluted 1:50,000 - 100,000.
USER NOTE:	Optimal dilutions for each application to be determined by the researcher.
POSITIVE CONTROL:	1) Cat. No. 1211 - HepG2 Cell Lysate
PREDICTED MOLECULAR WEIGHT:	60 kDa
IMMUNOGEN:	Antibody produced in rabbits immunized with a synthetic peptide corresponding a region of human PRMT3.
HOST SPECIES:	Rabbit

Properties

PURIFICATION:	Antibody is purified by peptide affinity chromatography method.
PHYSICAL STATE:	Lyophilized
BUFFER:	Antibody is lyophilized in PBS buffer with 2% sucrose. Add 50 uL of distilled water. Final antibody concentration is 1 mg/mL.
CONCENTRATION:	1 mg/ml
STORAGE CONDITIONS:	For short periods of storage (days) store at 4°C. For longer periods of storage, store PRMT3 antibody at -20°C. As with any antibody avoid repeat freeze-thaw cycles.
CLONALITY:	Polyclonal
CONJUGATE:	Unconjugated

Additional Info

ALTERNATE NAMES:	PRMT3, HRMT1L3
ACCESSION NO.:	NP_005779
PROTEIN GI NO.:	44771198

OFFICIAL SYMBOL:	PRMT3
GENE ID:	10196

Background

BACKGROUND:	PRMT3 is a ribosomal protein methyltransferase that affects the cellular level of ribosomal subunits
REFERENCES:	1) Singh, V., et al., (2004) Oncogene 23 (47), 7761-7771.

FOR RESEARCH USE ONLY

December 12, 2016