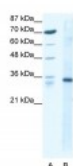




KLF3 Antibody

CATALOG NUMBER: 27-513



Antibody used in WB on Human HepG2 at
1.25 ug/ml.

Specifications

SPECIES REACTIVITY:	Human
TESTED APPLICATIONS:	ELISA, WB
APPLICATIONS:	KLF3 antibody can be used for detection of KLF3 by ELISA at 1:312500. KLF3 antibody can be used for detection of KLF3 by western blot at 1.25 ug/mL, and HRP conjugated secondary antibody should be diluted 1:50,000 - 100,000.
USER NOTE:	Optimal dilutions for each application to be determined by the researcher.
POSITIVE CONTROL:	1) Cat. No. 1211 - HepG2 Cell Lysate
PREDICTED MOLECULAR WEIGHT:	39 kDa
IMMUNOGEN:	Antibody produced in rabbits immunized with a synthetic peptide corresponding a region of human KLF3.
HOST SPECIES:	Rabbit

Properties

PURIFICATION:	Antibody is purified by protein A chromatography method.
PHYSICAL STATE:	Lyophilized
BUFFER:	Antibody is lyophilized in PBS buffer with 2% sucrose. Add 100 uL of distilled water. Final antibody concentration is 1 mg/mL.
CONCENTRATION:	1 mg/ml
STORAGE CONDITIONS:	For short periods of storage (days) store at 4°C. For longer periods of storage, store KLF3 antibody at -20°C. As with any antibody avoid repeat freeze-thaw cycles.
CLONALITY:	Polyclonal
CONJUGATE:	Unconjugated

Additional Info

ALTERNATE NAMES:	KLF3, BKLF
ACCESSION NO.:	NP_057615
PROTEIN GI NO.:	156151371

OFFICIAL SYMBOL: KLF3

GENE ID: 51274

Background

BACKGROUND: KLF3 is a zinc finger transcription factor that is known to function as a potent transcriptional repressor

REFERENCES: 1) Perdomo, J., et al., (2005) Mol. Cell. Biol. 25 (4), 1549-1559.

FOR RESEARCH USE ONLY

December 12, 2016