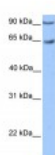




## ZNF449 Antibody

CATALOG NUMBER: 27-530



Antibody used in WB on Transfected 293T  
at 0.2-1 ug/ml.

### Specifications

<b>SPECIES REACTIVITY:</b>	Human, Mouse, Rat
<b>TESTED APPLICATIONS:</b>	ELISA, WB
<b>APPLICATIONS:</b>	ZNF449 antibody can be used for detection of ZNF449 by ELISA at 1:62500. ZNF449 antibody can be used for detection of ZNF449 by western blot at 1 ug/mL, and HRP conjugated secondary antibody should be diluted 1:50,000 - 100,000.
<b>USER NOTE:</b>	Optimal dilutions for each application to be determined by the researcher.
<b>POSITIVE CONTROL:</b>	1) Transfected 293T Cell Lysate
<b>PREDICTED MOLECULAR WEIGHT:</b>	60 kDa
<b>IMMUNOGEN:</b>	Antibody produced in rabbits immunized with a synthetic peptide corresponding a region of human ZNF449.
<b>HOST SPECIES:</b>	Rabbit

### Properties

<b>PURIFICATION:</b>	Antibody is purified by peptide affinity chromatography method.
<b>PHYSICAL STATE:</b>	Lyophilized
<b>BUFFER:</b>	Antibody is lyophilized in PBS buffer with 2% sucrose. Add 50 uL of distilled water. Final antibody concentration is 1 mg/mL.
<b>CONCENTRATION:</b>	1 mg/ml
<b>STORAGE CONDITIONS:</b>	For short periods of storage (days) store at 4°C. For longer periods of storage, store ZNF449 antibody at -20°C. As with any antibody avoid repeat freeze-thaw cycles.
<b>CLONALITY:</b>	Polyclonal
<b>CONJUGATE:</b>	Unconjugated

### Additional Info

<b>ALTERNATE NAMES:</b>	ZNF449, FLJ23614, ZSCAN19
<b>ACCESSION NO.:</b>	NP_689908
<b>PROTEIN GI NO.:</b>	194239638

**OFFICIAL SYMBOL:** ZNF449

**GENE ID:** 203523

### Background

**BACKGROUND:** ZNF449 belongs to the krueppel C2H2-type zinc-finger protein family. It contains 7 C2H2-type zinc fingers and 1 SCAN box domain. ZNF449 may be involved in transcriptional regulation.

**REFERENCES:** 1) Luo, K., (2006) Mol. Biol. Rep. 33 (1), 51-57.

**FOR RESEARCH USE ONLY**

December 12, 2016