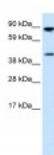




ETV4 Antibody

CATALOG NUMBER: 27-533



Antibody used in WB on Human Small Intestine at 0.2-1 ug/ml.

Specifications

SPECIES REACTIVITY:	Human, Mouse, Rat
TESTED APPLICATIONS:	ELISA, WB
APPLICATIONS:	ETV4 antibody can be used for detection of ETV4 by ELISA at 1:312500. ETV4 antibody can be used for detection of ETV4 by western blot at 0.5 ug/mL, and HRP conjugated secondary antibody should be diluted 1:50,000 - 100,000.
USER NOTE:	Optimal dilutions for each application to be determined by the researcher.
POSITIVE CONTROL:	1) Cat. No. XBL-10420 - Fetal Small Intestine Tissue Lysate
PREDICTED MOLECULAR WEIGHT:	54 kDa
IMMUNOGEN:	Antibody produced in rabbits immunized with a synthetic peptide corresponding a region of human ETV4.
HOST SPECIES:	Rabbit

Properties

PURIFICATION:	Antibody is purified by peptide affinity chromatography method.
PHYSICAL STATE:	Lyophilized
BUFFER:	Antibody is lyophilized in PBS buffer with 2% sucrose. Add 50 uL of distilled water. Final antibody concentration is 1 mg/mL.
CONCENTRATION:	1 mg/ml
STORAGE CONDITIONS:	For short periods of storage (days) store at 4°C. For longer periods of storage, store ETV4 antibody at -20°C. As with any antibody avoid repeat freeze-thaw cycles.
CLONALITY:	Polyclonal
CONJUGATE:	Unconjugated

Additional Info

ALTERNATE NAMES:	ETV4, E1AF, PEA3, E1A-F, PEAS3
ACCESSION NO.:	NP_001977
PROTEIN GI NO.:	24307883

OFFICIAL SYMBOL: ETV4

GENE ID: 2118

Background

BACKGROUND: The protein encoded by the ETV4 gene is known to play a role in ovarian and breast malignancies as well as in the early stage of colorectal carcinogenesis.

REFERENCES: 1) Span, P.N., et al., (2003) Breast Cancer Res. Treat. 79 (1), 129-131.

FOR RESEARCH USE ONLY

December 12, 2016