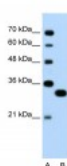




TFEC Antibody

CATALOG NUMBER: 27-535



Antibody used in WB on Human Jurkat
0.2-1 ug/ml.

Specifications

SPECIES REACTIVITY:	Dog, Human, Rat
TESTED APPLICATIONS:	ELISA, WB
APPLICATIONS:	TFEC antibody can be used for detection of TFEC by ELISA at 1:62500. TFEC antibody can be used for detection of TFEC by western blot at 0.25 ug/mL, and HRP conjugated secondary antibody should be diluted 1:50,000 - 100,000.
USER NOTE:	Optimal dilutions for each application to be determined by the researcher.
POSITIVE CONTROL:	1) Cat. No. 1205 - Jurkat Cell Lysate
PREDICTED MOLECULAR WEIGHT:	35 kDa, 39 kDa
IMMUNOGEN:	Antibody produced in rabbits immunized with a synthetic peptide corresponding a region of human TFEC.
HOST SPECIES:	Rabbit

Properties

PURIFICATION:	Antibody is purified by peptide affinity chromatography method.
PHYSICAL STATE:	Lyophilized
BUFFER:	Antibody is lyophilized in PBS buffer with 2% sucrose. Add 50 uL of distilled water. Final antibody concentration is 1 mg/mL.
CONCENTRATION:	1 mg/ml
STORAGE CONDITIONS:	For short periods of storage (days) store at 4°C. For longer periods of storage, store TFEC antibody at -20°C. As with any antibody avoid repeat freeze-thaw cycles.
CLONALITY:	Polyclonal
CONJUGATE:	Unconjugated

Additional Info

ALTERNATE NAMES:	TFEC, TC FEC, TFECL, TFE-C, TFEC-L, bHLHe34, hTFEC-L
ACCESSION NO.:	NP_001018068
PROTEIN GI NO.:	64762402

OFFICIAL SYMBOL: TFEC

GENE ID: 22797

Background

BACKGROUND: TFEC is an activator of transcription with two separate activation domains.

REFERENCES: 1) Mansky, K.C., (2002) J. Leukoc. Biol. 71 (2), 304-310.

FOR RESEARCH USE ONLY

December 12, 2016