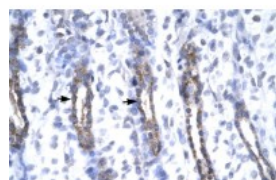


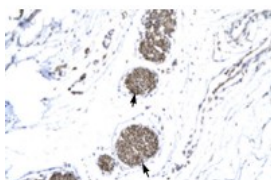


MMP19 Antibody

CATALOG NUMBER: 27-548



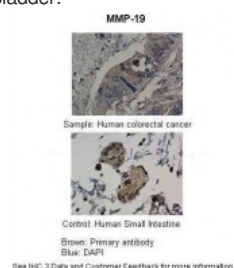
Antibody used in IHC on Human urinary bladder.



Antibody used in IHC on Human urinary bladder.



Antibody used in WB on Human HepG2 at 0.2-1 ug/ml.



Antibody used in IHC on Human at: 1:100.

Specifications	
SPECIES REACTIVITY:	Dog, Human
TESTED APPLICATIONS:	ELISA, IHC, WB
APPLICATIONS:	MMP19 antibody can be used for detection of MMP19 by ELISA at 1:62500. MMP19 antibody can be used for detection of MMP19 by western blot at 0.5 ug/mL, and HRP conjugated secondary antibody should be diluted 1:50,000 - 100,000.
USER NOTE:	Optimal dilutions for each application to be determined by the researcher.
POSITIVE CONTROL:	1) Cat. No. 1211 - HepG2 Cell Lysate
PREDICTED MOLECULAR WEIGHT:	56 kDa
IMMUNOGEN:	Antibody produced in rabbits immunized with a synthetic peptide corresponding a region of human MMP19.
HOST SPECIES:	Rabbit
Properties	
PURIFICATION:	Antibody is purified by peptide affinity chromatography method.
PHYSICAL STATE:	Lyophilized
BUFFER:	Antibody is lyophilized in PBS buffer with 2% sucrose. Add 100 uL of distilled water. Final antibody concentration is 1 mg/mL.
CONCENTRATION:	1 mg/ml

STORAGE CONDITIONS: For short periods of storage (days) store at 4°C. For longer periods of storage, store MMP19 antibody at -20°C. As with any antibody avoid repeat freeze-thaw cycles.

CLONALITY: Polyclonal

CONJUGATE: Unconjugated

Additional Info

ALTERNATE NAMES: MMP19, MMP18, RASI-1

ACCESSION NO.: NP_002420

PROTEIN GI NO.: 4505213

OFFICIAL SYMBOL: MMP19

GENE ID: 4327

Background

BACKGROUND: Proteins of the matrix metalloproteinase (MMP) family are involved in the breakdown of extracellular matrix in normal physiological processes, such as embryonic development, reproduction, and tissue remodeling. They are also involved in disease processes, such as arthritis and metastasis. Most MMP's are secreted as inactive proproteins which are activated when cleaved by extracellular proteinases. The function of MMP-19 has not been determined. This gene corresponding to this protein was previously referred to as MMP18 but has been renamed matrix metalloproteinase 19 (MMP19). Multiple transcript variants encoding distinct isoforms have been identified for this gene.

REFERENCES: 1) Sadowski, T., et al., (2003) Mol.Biol.Cell14(11), 4569-4580.

FOR RESEARCH USE ONLY

December 12, 2016