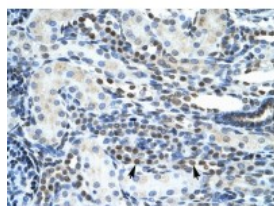


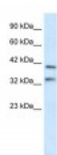


GSH2 Antibody

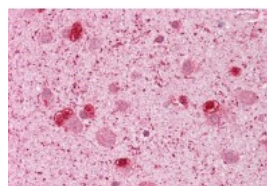
CATALOG NUMBER: 27-518



Antibody used in IHC.



Antibody used in WB on Human Liver at 0.2-1 ug/ml.



Antibody used in IHC on Human brain at 5 ug/ml.

Specifications

SPECIES REACTIVITY:	Dog, Human
TESTED APPLICATIONS:	ELISA, WB
APPLICATIONS:	GSH2 antibody can be used for detection of GSH2 by ELISA at 1:312500. GSH2 antibody can be used for detection of GSH2 by western blot at 1.0 ug/mL, and HRP conjugated secondary antibody should be diluted 1:50,000 - 100,000.
USER NOTE:	Optimal dilutions for each application to be determined by the researcher.
POSITIVE CONTROL:	1) Cat. No. XBL-10409 - Fetal Liver Tissue Lysate
PREDICTED MOLECULAR WEIGHT:	32 kDa
IMMUNOGEN:	Antibody produced in rabbits immunized with a synthetic peptide corresponding a region of human GSH2.
HOST SPECIES:	Rabbit

Properties

PURIFICATION:	Antibody is purified by peptide affinity chromatography method.
PHYSICAL STATE:	Lyophilized
BUFFER:	Antibody is lyophilized in PBS buffer with 2% sucrose. Add 50 uL of distilled water. Final antibody concentration is 1 mg/mL.
CONCENTRATION:	1 mg/ml
STORAGE CONDITIONS:	For short periods of storage (days) store at 4°C. For longer periods of storage, store GSH2 antibody at -20°C. As with any antibody avoid repeat freeze-thaw cycles.
CLONALITY:	Polyclonal
CONJUGATE:	Unconjugated

Additional Info

ALTERNATE NAMES:	GSH2, GSH2
ACCESSION NO.:	NP_573574
PROTEIN GI NO.:	18959212

OFFICIAL SYMBOL: GSX2

GENE ID: 170825

Background

BACKGROUND: homeobox protein GSH-2

REFERENCES: 1) Cools, J., (2002) Blood 99 (5), 1776-1784.

FOR RESEARCH USE ONLY

December 12, 2016