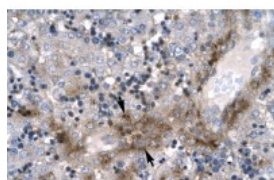


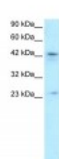


ZNF365 Antibody

CATALOG NUMBER: 27-537



Antibody used in IHC on Human Liver at 4.0-8.0 ug/ml.



Antibody used in WB on Human HepG2 at 0.2-1 ug/ml.



Antibody used in WB on Human HepG2 at 0.2-1 ug/ml.

Specifications

SPECIES REACTIVITY:	Human, Mouse, Rat
TESTED APPLICATIONS:	ELISA, IHC, WB
APPLICATIONS:	ZNF365 antibody can be used for detection of ZNF365 by ELISA at 1:62500. ZNF365 antibody can be used for detection of ZNF365 by western blot at 1.0-10.0 ug/mL, and HRP conjugated secondary antibody should be diluted 1:50,000 - 100,000.
USER NOTE:	Optimal dilutions for each application to be determined by the researcher.
POSITIVE CONTROL:	1) Cat. No. 1211 - HepG2 Cell Lysate
PREDICTED MOLECULAR WEIGHT:	36 kDa, 53 kDa
IMMUNOGEN:	Antibody produced in rabbits immunized with a synthetic peptide corresponding a region of human ZNF365.
HOST SPECIES:	Rabbit

Properties

PURIFICATION:	Antibody is purified by peptide affinity chromatography method.
PHYSICAL STATE:	Lyophilized
BUFFER:	Antibody is lyophilized in PBS buffer with 2% sucrose. Add 50 uL of distilled water. Final antibody concentration is 1 mg/mL.
CONCENTRATION:	1 mg/ml
STORAGE CONDITIONS:	For short periods of storage (days) store at 4°C. For longer periods of storage, store ZNF365 antibody at -20°C. As with any antibody avoid repeat freeze-thaw cycles.
CLONALITY:	Polyclonal
CONJUGATE:	Unconjugated

Additional Info

ALTERNATE NAMES:	ZNF365, UAN, Su48, ZNF365D
ACCESSION NO.:	NP_955522
PROTEIN GI NO.:	40789310

OFFICIAL SYMBOL: ZNF365

GENE ID: 22891

Background

BACKGROUND: Zinc Finger Protein 365 Isoform B (ZNF365) is a new candidate transcription factor.

REFERENCES: 1) Gianfrancesco, F., et al., (2003) Am.J.Hum.Genet.72(6), 1479-1491.

FOR RESEARCH USE ONLY

December 12, 2016